

| FED. DIST. NO. | STATE | FED. AID PROJ. NO. | FISCAL YEAR | SHEET NO. | TOTAL SHEETS |
|----------------|-------|--------------------|-------------|-----------|--------------|
| 6              | ARK.  | 25-112             | 1934        | 1         | 7            |

INDEX OF SHEETS

|             |                  |                                       |
|-------------|------------------|---------------------------------------|
| Sheet No. 1 | Drawing No. 3674 | Titic Sheet                           |
| " " 2       | " " 3675         | Layout of Bridge No. 1858             |
| " " 3       | " " 3676         | " " " " 1859                          |
| " " 4       | " " 3677         | " " " " 1860                          |
| " " 5       | " " 2158         | Details of 25'0" Standard I-Beam Span |
| " " 6       | " " 3712         | " " Beam Spans Br. No. 1859           |
| " " 7       | " " 2386         | " " Bridge Name Plates                |

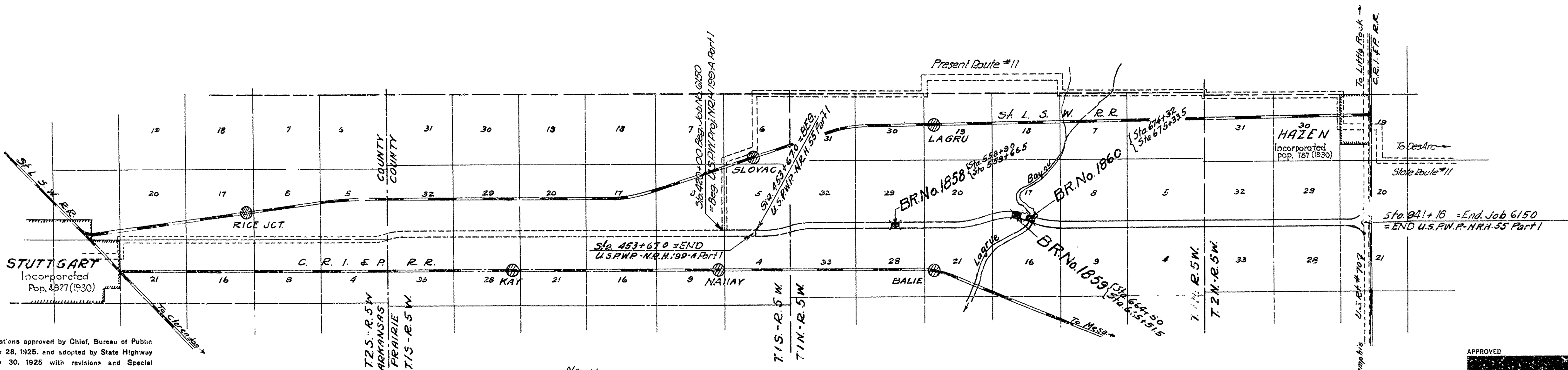
STATE OF ARKANSAS  
STATE HIGHWAY COMMISSION

PLAN OF PROPOSED BRIDGES  
HAZEN-ARK. COUNTY LINE ROAD  
PRAIRIE COUNTY  
ROUTE II SEC. 8  
JOB NO 6144  
FEDERAL AID PROJECT NO. NRH 55 PART 2

QUANTITIES

|          |    |                                 |         |          |
|----------|----|---------------------------------|---------|----------|
| Item No. | 91 | Class "S" Concrete for Bridges  | 285.06  | Cu. Yds. |
| " "      | 92 | Reinforcing Steel for Bridges   | 54,416. | Lbs.     |
| " "      | 93 | Concrete Filing                 | 1,638.  | Lin. Ft. |
| " "      | 94 | Concrete Railing for Bridges    | 584.    | Lin. Ft. |
| " "      | 96 | Structural Steel in Beam Spans  | 96,015  | Lbs.     |
| " "      | SP | Bronze State Bridge Name Plates | 6.      | Each     |

Limits of Project: Ends of Bridges as shown below.



Specifications approved by Chief, Bureau of Public Roads, September 28, 1925, and adopted by State Highway Commission May 30, 1925 with revisions and Special Provisions as follows:

| REVISIONS         |                         |                        |
|-------------------|-------------------------|------------------------|
| Pamphlet A        | Revised Mar. 1st, 1931  | Approved June 13, 1931 |
| " L               | Revised Feb. 10th, 1933 |                        |
| " M               | Revised Mar. 1st, 1931  | Approved June 13, 1931 |
| " N               | Revised Oct. 1st, 1933  |                        |
| " O               | Revised Oct. 1st, 1933  |                        |
| Labor (12 Sheets) | Approved Oct. 13, 1933  |                        |

| SPECIAL PROVISIONS                                      |               |         |
|---|---------------|---------|
| Item  | No. of Sheets | Date    |
| Minimum Wage Scale                                      | 1             |         |
| Labor Preference  | 1             |         |
| Beginning & Prosecution of Work                         | 2             | 1-12-34 |
| Compliance with N.E.A. Codes Construction & Materials   | 1             |         |
| Bronze Project Marker Pls. & Bronze State Br. Name Pls. | 1             | 8-10-33 |

Road and grading to be constructed under State Job No. 6150, U.S.P.W.P. Proj. No. NRH 55 Part 1

LAYOUT  
Scale: 1"=4000'

|                      |   |       |                      |
|----------------------|---|-------|----------------------|
| LENGTH OF PROJECT    | = | 279.5 | Lin. Ft. = 0.052 Mi. |
| LENGTH OF BRIDGES    | = | 279.5 | " " = 0.052 Mi.      |
| LENGTH OF EMBANKMENT | = | 0     |                      |
| LENGTH OF JOB        | = | 279.5 | " " = 0.052 Mi.      |

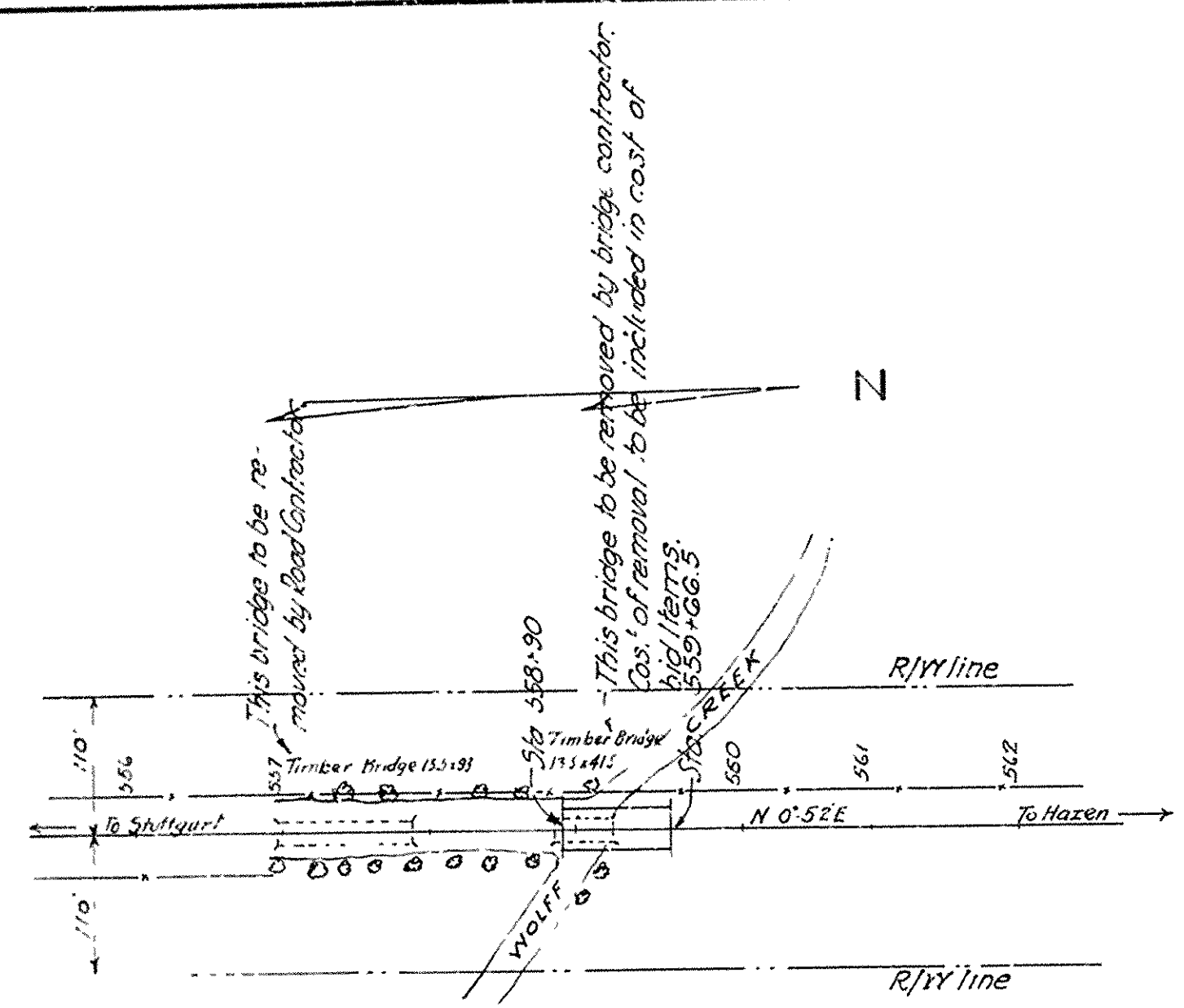
APPROVED  
CHIEF ENGINEER - U. S. BUREAU OF PUBLIC ROADS  
APPROVED  
DISTRICT ENGINEER - U. S. BUREAU OF PUBLIC ROADS  
APPROVED  
CHIEF - U. S. BUREAU OF PUBLIC ROADS  
APPROVED  
CHAIRMAN - STATE HIGHWAY COMMISSION  
APPROVED  
STATE HIGHWAY ENGINEER

M.B. Larrow  
BRIDGE ENGINEER

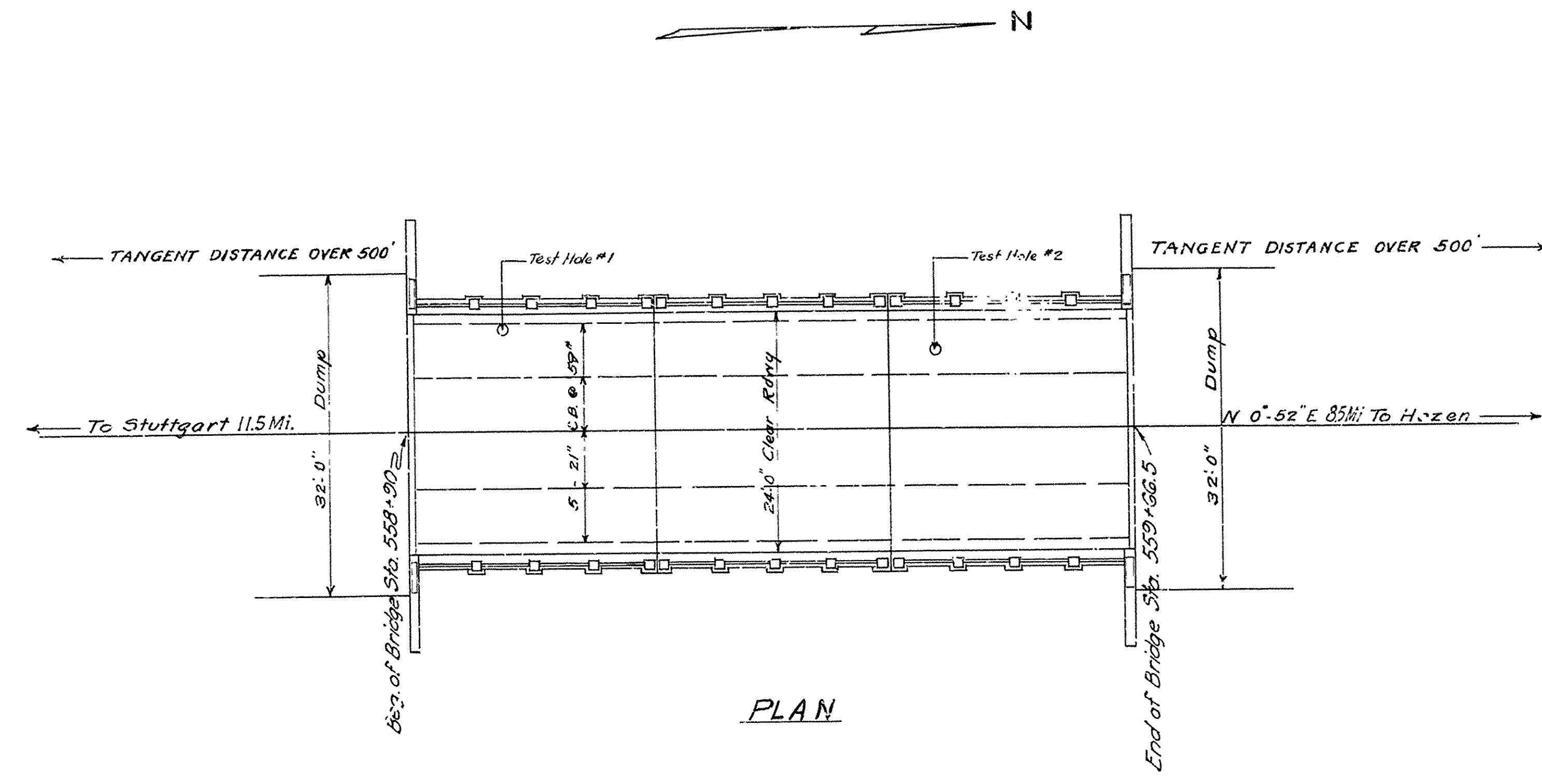
BRIDGES No. 1858-1859-1860  
DRAWING NO. 3674

| FISCAL YEAR | STATE | FEDERAL DISTRICT | PROJECT No       | SHEET No | TOTAL SHEETS |
|-------------|-------|------------------|------------------|----------|--------------|
| 1934        | ARK.  | 6                | J.R.H. 25th Div. | 2        | 7            |

State Job No. 6144



LOCATION SKETCH  
Scale 1" = 100'



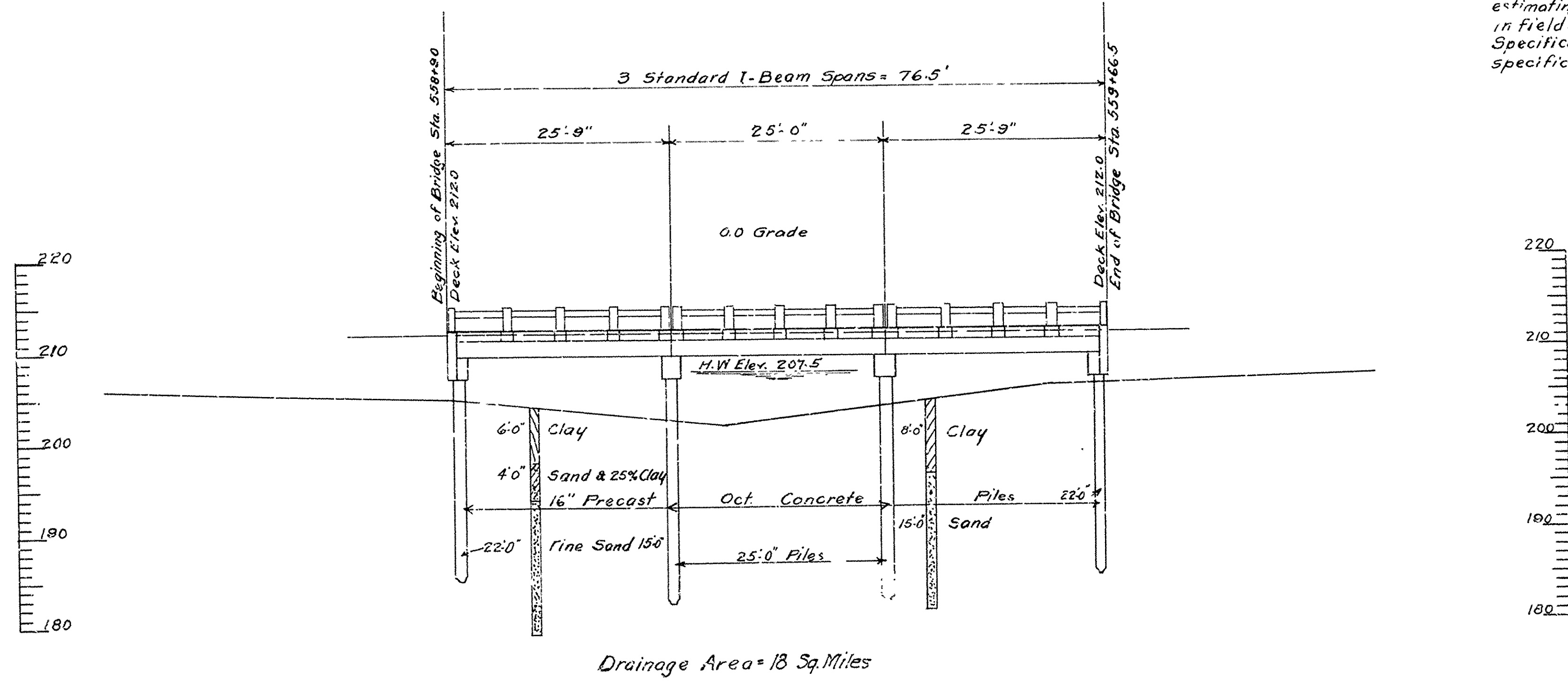
PLAN

QUANTITIES

|             |                                 |        |         |
|-------------|---------------------------------|--------|---------|
| Item No. 91 | Class "S" Concrete for Bridges  | 78.96  | Cu Yds. |
| " 92        | Reinforcing Steel for Bridges   | 15,288 | Lbs.    |
| " 93        | Concrete Piling                 | 464    | Lin Ft  |
| " 94        | Concrete Railing for Bridges    | 161.34 | Lin Ft  |
| " 96        | Structural Steel in Beam Spans  | 26,120 | Lbs.    |
| " 5P        | Bronze State Bridge Name Plates | 2      | Each    |

Old timber bridge, Sta. 558+85.5 to Sta. 559+27, to be removed by bridge contractor. Cost of removal to be included in cost of the above bid items.

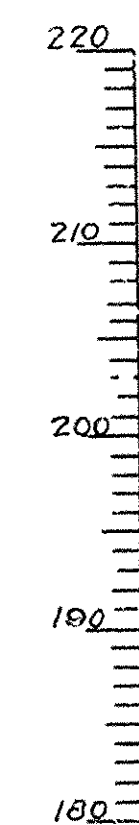
GENERAL NOTES: Lengths of piling shown were assumed for estimating quantities only. Actual lengths are to be determined in field. For details of Bridge No. 1858 see Drwg. No. 2158. Specifications: Arkansas Standard Road and Bridge specifications adopted May 30th, 1925 and Revised



ELEVATION

B.M. #62 Spike in Forked Elm  
80' Left Sta. 557+75 Elev 206.36

Drainage Area = 18 Sq. Miles



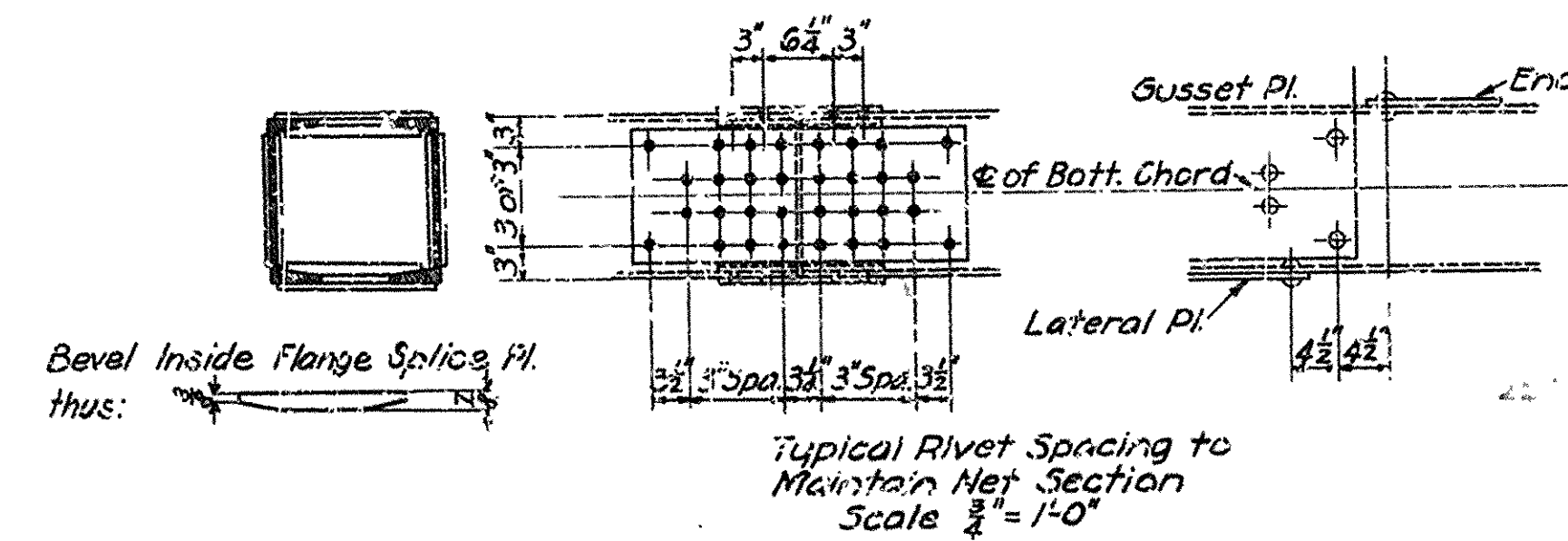
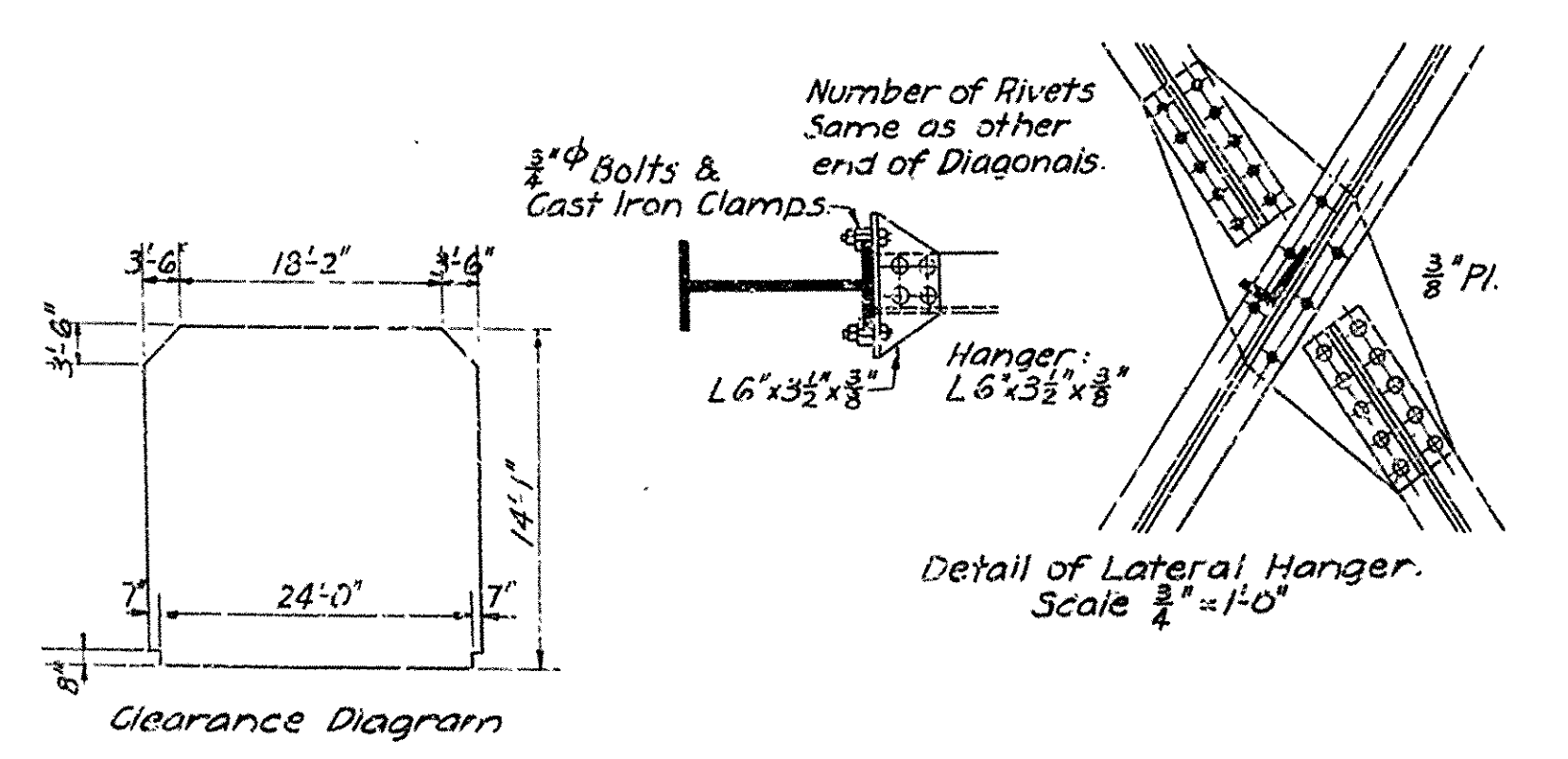
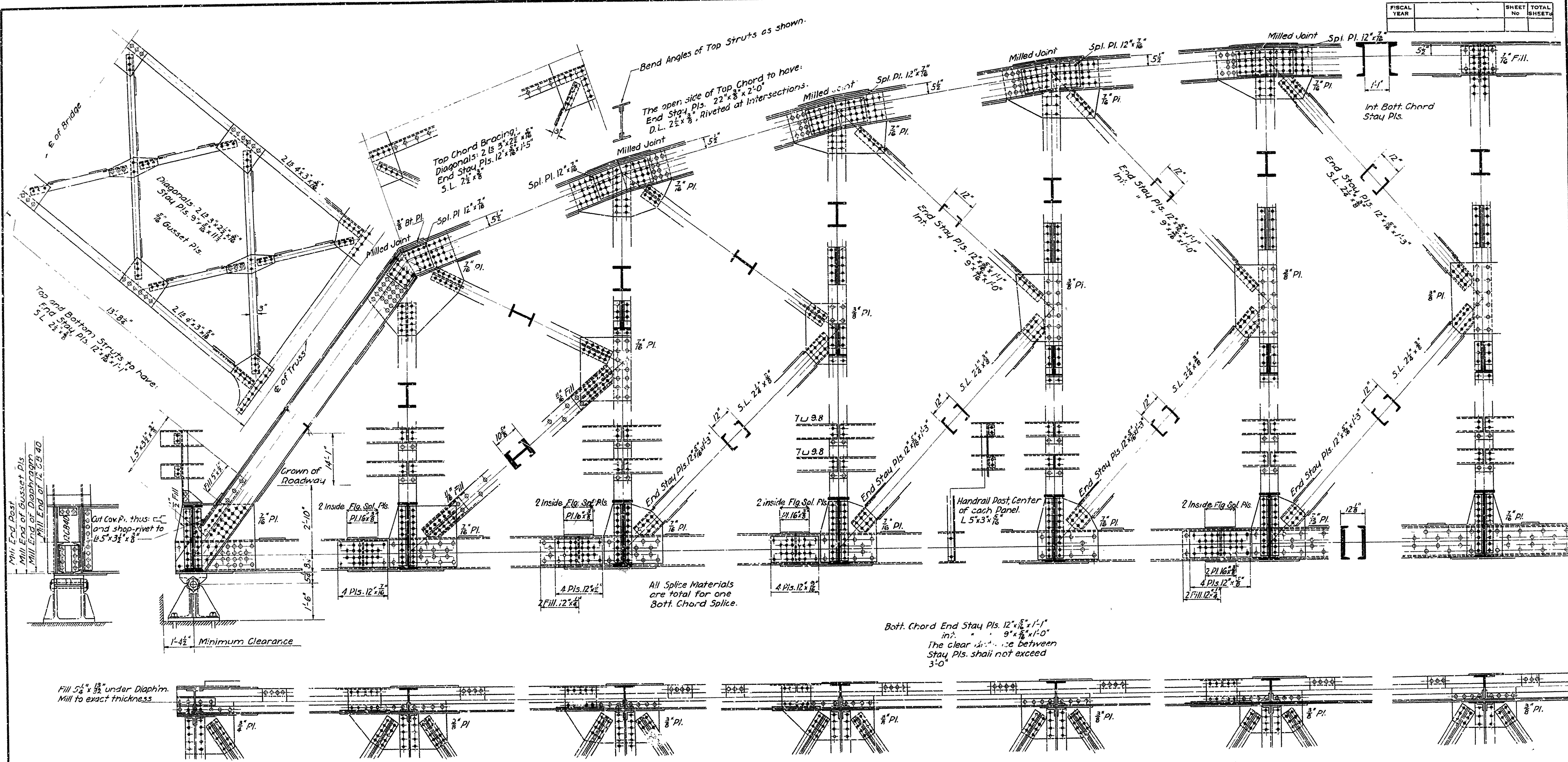
LAYOUT OF  
BRIDGE AT STA. 558+90  
HAZEN-ARK. COUNTYLINE ROAD  
PRAIRIE COUNTY  
ROUTE 11 SEC. 8

ARKANSAS STATE HIGHWAY COMMISSION  
LITTLE ROCK, ARK.  
Drawn By: E.G.T. Date: 2/14/34  
Traced By: E.G.T. Date: 2/16/34  
Checked By: \_\_\_\_\_ Date: \_\_\_\_\_  
Scale: 1 in. = 10 ft.  
BRIDGE No. 1858 DRAWING No. 3675

M.B. Kupper  
BRIDGE ENGINEER



| FISCAL YEAR | SHEET NO. | TOTAL SHEETS |
|-------------|-----------|--------------|
|             |           |              |



For Notes See Drwg No. 2459

**DETAILS**  
**225'-0" THROUGH TRUSS SPAN**  
**24'-0" CLEAR ROADWAY**  
**ROUTE 280**

**ARKANSAS STATE HIGHWAY COMMISSION**  
**LITTLE ROCK, ARK.**

Drawn By: *[Signature]* Date: 5-12-30  
Traced By: *[Signature]* Date: 5-12-30  
Checked By: *[Signature]* Date: 4-12-30

Scale: *as noted*

BRIDGE ENGINEER

BRIDGE NO. *[Blank]* DRAWING NO. 2458